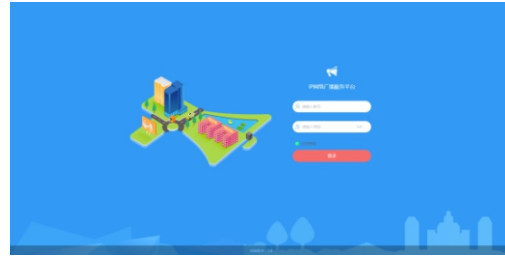
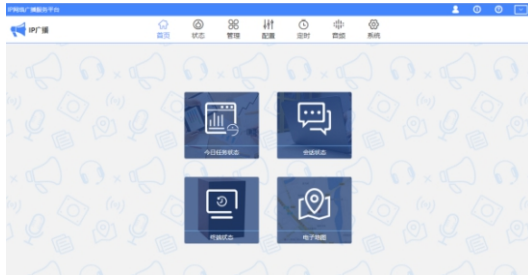




Software (Digital IP network broadcasting client management software V1.0) T-7700RP



Description

Installed in broadcasting control center or computer, broadcasting system management and control software serves as an integrated management platform for data exchange, system operation and function operation.

Features

- * The Software, the operating core of whole system, centrally manages all audio terminals in the system, including paging MIC, intercom terminal, broadcasting terminal and fire interface device, as well as display operating conditions of audio terminals like IP address, online condition, task condition and volume and so on in real time.
- * Support each audio terminal's operation, audio streaming transmission management, broadcasting from each audio terminal and full-duplex exchange of audio and B/S architecture. Support terminal management, user management, program broadcasting management, audio files management, record storage and internal communication scheduling through web login.
- * Support program database sources management, timing broadcast and real-time media service VOD for all audio terminals, program broadcasting for each terminal and data interface service for each audio workstation
- * Support full-duplex voice data exchange, paging and call from each intercom terminal, various calling modes (like one button to call, one button to intercom, one button to ask for help, one button to alarm and so on), automatic answer, manual answer and custom answer tone.
- * Support multiple calling strategy, including call waiting, call forwarding, no answer reminder and custom setting for time strategy and forwarding strategy. It supports setting up call strategy of intercom terminal. It can customize the call time from 0 to 180S or not. It can choose whether to answer automatically or not. It also supports customizing the choice of caller ringtone and waiting ringtone.
- * Support terminal short circuit linkage trigger. Users can arbitrarily set the trigger scheme and trigger terminal quantity. Trigger scheme includes short circuit output, music playback and patrol alarm, etc.
- * Programming timing tasks. Support for programming multiple timing programs, support for selecting any terminal and setting any time. Support timed task execution test, repetition cycle and a variety of audio source selection for timing tasks (music playback, sound card acquisition, terminal acquisition).
- * Support multiple schemes of timed ringing to be enabled at the same time. Each scheme supports multiple tasks to be carried out at the same time. Support all schemes to be enabled/disabled by one key.
- * Support customized timing bell, bell scheme cloning, task execution and stop control, disable and enable function of timing task.
- * Support timing patrol, execution time and repetition period of the custom patrol task, 0-30s customized interval of the indicator flashing and external lock-free button short-circuit switch (with 3.3V LED indicator light).
- * Support today's task list view, which is easy to manage all scheduled task information and execution status performed today.
- * Support terminal tamper alarm. Trigger terminal alarm when terminal is demolished or trigger alarm for other terminal linkage. Support alarm task to automatically cancel the alarm function.
- * Support external power management of audio terminals, timing switch on and delay off. Support light control and the light mode configuration.
- * Support whole zone, part zone fire linkage, N±N fire mode, artificial alarm and digital alarm mixing, alarm configuration to trigger terminal collection tasks
- * Support terminals' login password central management, multiple priority management, easy automatic authorization, task priority, terminal priority, user priority customization.
- * Support sub-control management of multi-users and arbitrary degree to achieve remote program broadcasting management.
- * Support multi-user, multi-level, specified permissions, specified functions, and specified terminals to classify and manage the background.