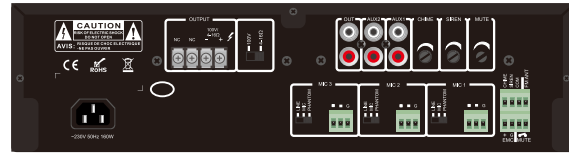
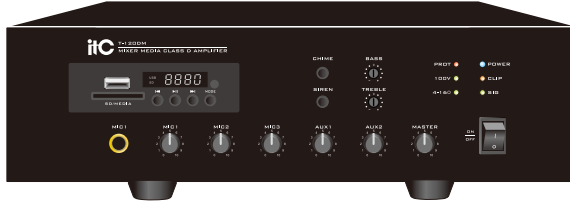




Desktop Digital Mixer Amplifier with MP3/Tuner/Bluetooth (Phoenix Mic Input)

T-500DM



Specifications

Model	T-500DM
Output interface	4-16Ω, 100V
Output power	500W
Input sensitivity & impedance	MIC1, 2, 3, 4 input: 5mV/600Ω unbalanced European connection interface; AUX1, 2 input: 350mV/10KΩ unbalanced RCA connection interface; EMC input: 775mV/10KΩ unbalanced European connection interface
Output sensitivity & source impedance	MIX OUT: 1000mV/470Ω unbalanced RCA connection interface
Tone	Bass: 10dB at 100Hz; Treble: 10dB at 10KHz
Frequency response	50Hz~16KHz(+1dB,-3dB)
Signal to noise ratio	MIC1, 2, 3:66dB; AUX1, 2:80dB
Distortion	Less than 0.5%(at 1KHz, 1/3 of rated power)
Mute function	MIC 1 is prior to mic2-4, aux1-2 audio input, and EMC is prior to all audio input
Channel crosstalk attenuation	≥50dB
Heat dissipation	Side in and back out forced fan cooling, starting the fan when turned on, infinitely variable speed processing
Protection	Overheat protection, overcurrent protection, short circuit protection
Power supply	AC ~220-240V /50Hz
Power consumption	650W
Dimension	324×270×88mm
Weight	5.6Kg

Product description

Desktop mini constant voltage digital power amplifier, with beautiful appearance and light weight; can be used for background music playback of small and medium-sized indoor venues such as small and medium-sized supermarkets, shopping malls, and leisure cafes.

Features

- * Desktop design, exquisite SMT process design.
- * Support mp3/TUNER/Bluetooth remote control function, with remote control remote and the control distance can up to 8 meters.
- * It has USB interface and SD card interface, integrated MP3 player module, with automatic priority playing audio function, digital screen can display the currently playing track of USB.
- * Integrated Bluetooth module to support music playback via Bluetooth of the mobile phone.
- * Integrated TUNER module with FM radio antenna port.
- * 1 channel EMC input, 2 channel AUX input, 4 channel MIC input.
- * Channel priority function EMC>SIREN>CHIME>MIC1>MIC2, MIC3, AUX1, AUX2.
- * Each input has independent volume adjustment, and the total volume has treble, bass adjustment and volume control function.
- * MIC1-4 balanced input, built-in 48 V phantom power supply.
- * Built-in bell and alarm audio source, can remotely controlling trigger.
- * Built-in control function of muting background music.
- * The device has good self-protections such as short circuit, overload and overheating.
- * Two output modes: constant voltage output 100V, constant resistance output 4-16Ω.
- * The high-efficiency energy-saving switching power supply is perfectly combined with the high-energy saving and ultra-stable design of class D digital power amplifier.
- * Wide voltage supply: 180V-240V can work normally.

Rear Panel

